

HOME OF THE WEEK



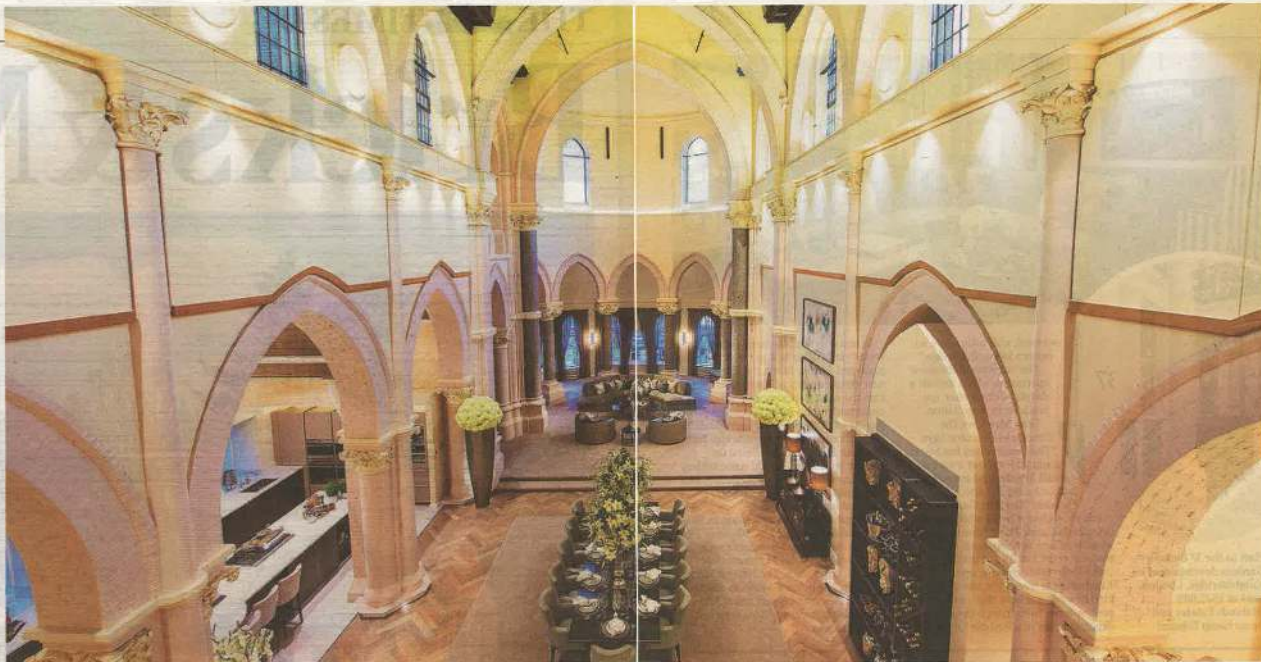
Sing hallelujah for a chapel

This Victorian church has been revived as a luxury house with a spa, says Jessie Hewitson

In 1871 Herbert Alfred Vaughan founded St Joseph's College in Mill Hill, north London. It was a place where Catholic missionaries-to-be learnt the tools of their trade in a grand ecclesiastical setting. By 2008 the seminary had fallen into disrepair and the number of missionaries in need of training had dwindled. This led to the priests taking a very modern decision: to sell to a property developer, while retaining the right to visit the graves of priests at the site.

The building has been converted into apartments and the grandest of the houses, the converted chapel, is coming to the market tomorrow. It is unlikely that anyone who has taken a vow of poverty will live here; the four-bedroom property, on the market with Knight Frank, has a guide price of £6 million. Spanning more than 8,000 sq ft, it has a cinema room, marble spa, orangery and an Italian kitchen.

Fans of Victorian gothic architecture will not be disappointed; the open-plan living area sits under a quadruple-height



The chapel in the St Joseph's Gate development in Mill Hill, north London, is on sale for £6 million with Knight Frank



Prime properties

By the estuary

Polruan, Cornwall
WHAT YOU GET A family house converted from a bistro, this property has five bedrooms, two bathrooms, an open-plan kitchen/living/dining room, garden room, utility room, study and a decked terrace. It also comes with a garage, a landscaped terraced garden (available by separate negotiation), a bathhouse and two outdoor moorings.
WHERE IS IT? By the harbour in Polruan, an ancient fishing village known for its boatbuilding heritage. A ferry links the village with Fowey. Truro is 33 miles away.
UPSIDE The views of the harbour.
DOWNSIDE The garden is a short walk from the house.
PRICE £1.75 million
CONTACT Savills, 01872 243200, savills.com



Listed house

Goudhurst, Kent
WHAT YOU GET A grade II* listed 16th-century, oak-framed Wealden hall house with beamed ceilings, period timber flooring and larch cottage-style doors. There are five bedrooms (one en suite), two shower rooms, a bathroom, kitchen, drawing room, utility room and a one-bedroom annexe. It comes with two acres of land and a tennis court.
WHERE IS IT? In a semi-rural spot, a mile from the village of Goudhurst. It is six miles from Maidstone, from where trains to London take an hour. Tunbridge Wells is 12 miles away.
UPSIDE The beautiful beamed ceilings.
DOWNSIDE The kitchen and bathrooms are dated.
PRICE 1.5 million
CONTACT Lambert & Foster, 01580 712888, lambertandfoster.co.uk



Village living

South Littleton, Worcestershire
WHAT YOU GET A grade II listed Georgian house set in three acres of land. The property has six bedrooms, three bathrooms (one en suite), kitchen/breakfast room, three reception rooms and a boot room. The land includes a three-bedroom annexe, swimming pool, tennis court, walled garden and a kitchen garden with a small vineyard.
WHERE IS IT? South Littleton, four miles from the market town of Evesham.
UPSIDE The converted coach house, which the owners run as a B&B.
DOWNSIDE There is a lot to look after.
PRICE £11.25 million
CONTACT Knight Frank, 01789 867244, land@knightfrank.co.uk
 Claire Carponen



ON THE MARKET

Make the move to a converted pub



Box, Wiltshire

This five-bedroom former pub features a dining room with a barrel ceiling, exposed Cotswold stone walls and beautiful stone fireplaces. Seven miles from Bath, it also comes with a one-bedroom annexe and a walled lawn garden with views over the village.
 £875,000, fineandcountry.com

Chiswick, W4

A former pub dating from the mid-16th century, this three-bedroom house is believed to be the oldest building in Chiswick. The property has its original pub frontage with two floors, atmospheric rooms with beamed ceilings, and a modern kitchen and bathrooms.
 £15 million, knightfrank.co.uk



Wadhurst, East Sussex

This four-bedroom house has a sitting room with a wood-burning stove and double doors leading to a one-acre garden. Originally a tear shop, it was set up when Wadhurst railway station opened in the mid-19th century.
 £775,000, hatchellernwolkhouse.com



Chislet, Kent

Dating from the 19th century, this five-bedroom Georgian-era house has a pleasing symmetrical facade and is five miles from the coast at Herne Bay. A reception room stretches across the front of the house, creating an impressive entrance.
 £745,000, struttandpariser.com
 Claire Carponen

